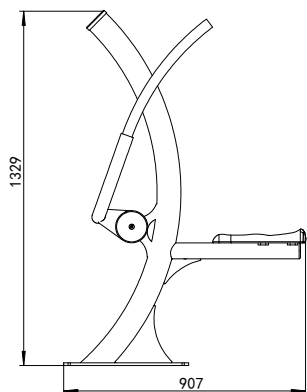
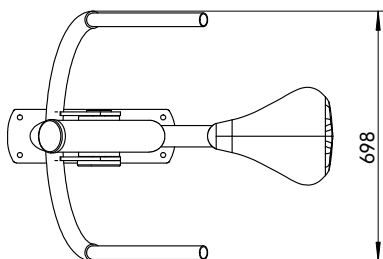


# Installation Guide UBX-704A Chest Press

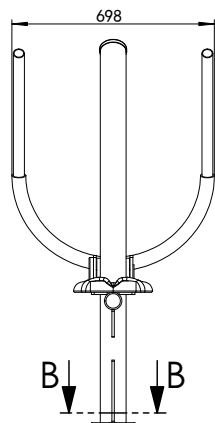
Side View



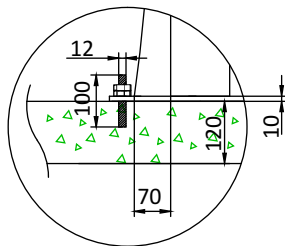
Top View



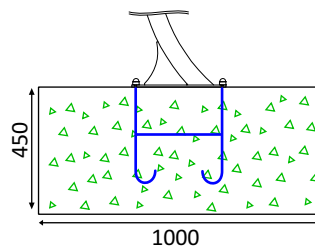
Front View



Surface installation  
with anchor bolt



Inground footer  
installation



Block Installation:

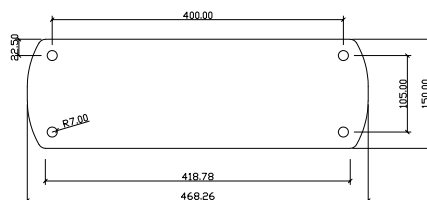


202 Liters

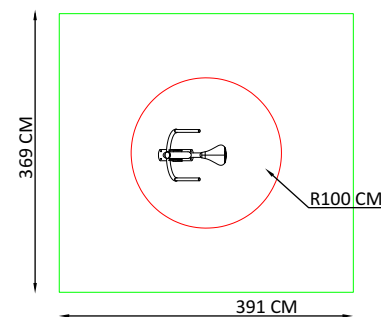
100x45x45 cm

485 Kg

Base Plate Dimension



Standard Safety Area



Installation instruction:

1. All units must be fully assembled and leveled before curing.
2. Body assembly screws must be attached using LocTite243.
3. Prevent access until concrete completely dry.
- \*4. Footer is ordered separately