

Technical Information

Ballgame - Netwall type BN 01

Page 1

Installation Instructions EN 1176-1

Maintenance Instructions EN 1176-1



17.02.16

General

The described work is to be carried out by qualified specialists.

Dimensions

Netwall (L x H)	2.92 x 1.89 m
Loophole	Ø 0.45 m
Mesh size	0.11 x 0.11 m
Safety area	1.85 m
min. space	5.9 x 3.1 m

Maximum free drop height

1.89 m

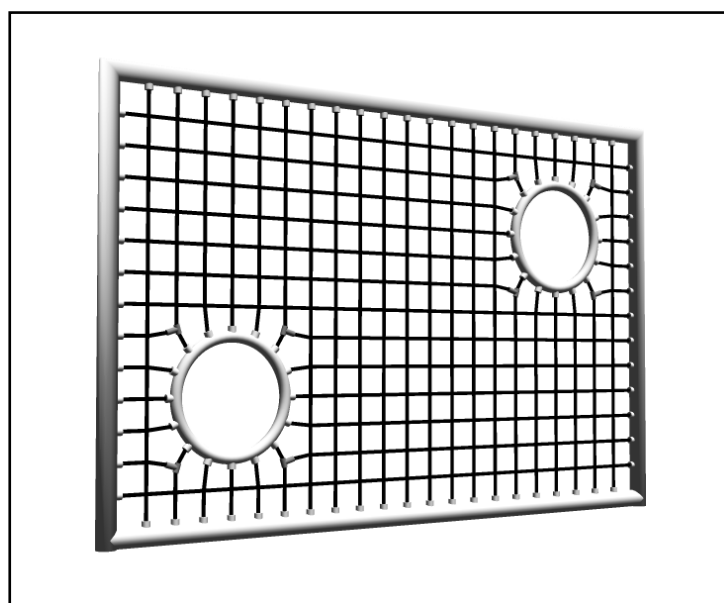


Figure 1 Ballgame Netwall

Ground quality

With regard to the type of ground in the play area, please refer to EN 1177. According to this, sand, wood chips, gravel and HIC tested synthetic protective coatings are allowed. We recommend a min. 400 mm layer of gravel (grain size 2 – 8 mm) or sand (grain size 0.2 - 2 mm). If you use synthetic protective surfaces it must be sure that all relevant parts for the maintenance (see maintenance instruction on page 5) are every time accessibly. If necessary consult smb.

Assembly tools

Required tools:

1 piece socket key size 27 with extension

Anchorage and Assembly

The anchoring is done in foundations. Here, the mould parting line of the flanges is the upper edge of the concrete foundations (**Fig. 3**).

Before the work on the foundation starts, the net wall has to be screwed onto the provided flange construction. Only then it is warranted that the Ballgame Netwall is after the pouring and curing of concrete straight and in balance.

For the HV-nuts M16 (Fig. 2) the socket wrench size 27 has to be used and it has to be ensured that the nuts are very firm fastened. **Please ensure a securing of the nuts by the supplied spring washer and splint pins.**

Note: No sand or dust should be between the flanges and screw connections.

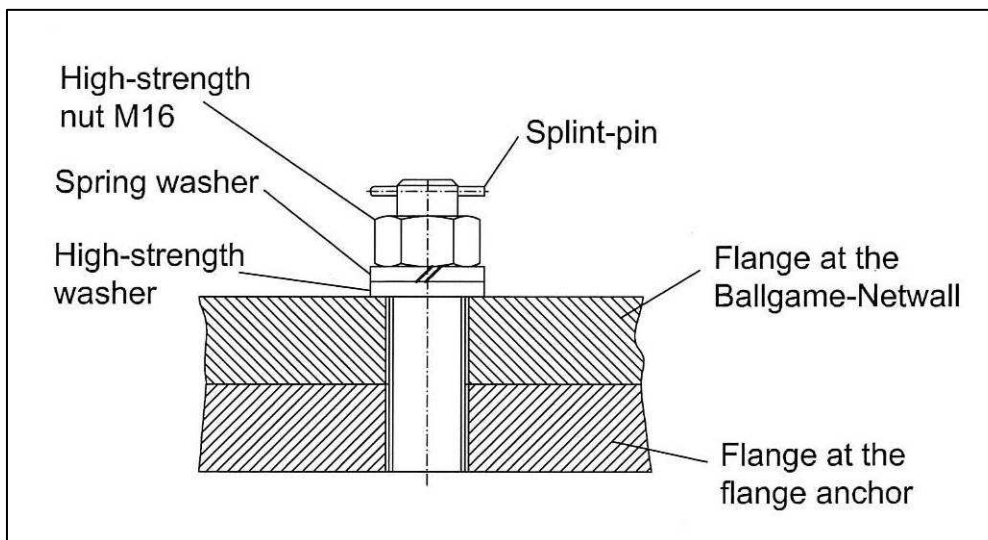


Figure 2 flange connection

Minimum concrete quality
for the foundations: **C20/25 (B25)**
Setting time: **min. 8 days**
Required quantity of concrete: **approx. 0,45m³**

We assume that the building ground is natural ground.
Failing this please confer with smb as the size of
foundation may has to be changed.

Packaging units

1	wooden box	ballgame netwall
1	pallet	anchors

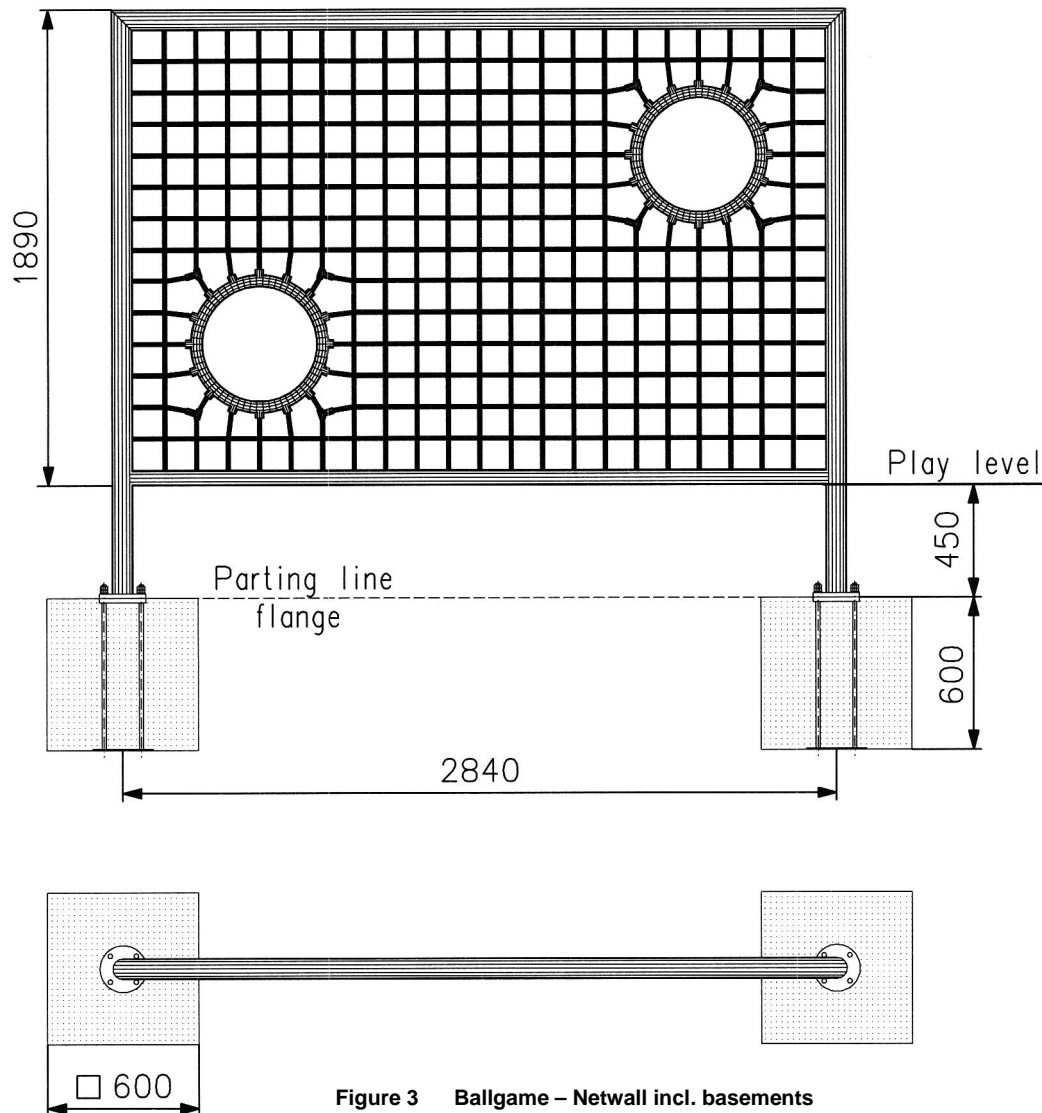


Figure 3 Ballgame – Netwall incl. basements

Maintenance instructions EN 1176-1

Visual routine inspection

Frequency will be based on local conditions (high / low use, vandalism, air pollution, effects of weather).

Operational inspection (twice-yearly)

The net wall has to be checked for damage. The fittings from the net to the frame and the loop holes have to be checked.

Main inspection (annual)

In addition to the checks in the visual and operational inspection:

Check the flange post of corrosion, in particular at the foundation. Check a tight fit of the nuts and missing splint pins are to be replaced.