

Technical Information



Page 1

Testing standard: EN 1176-1:2008 / EN 15312:2007



07.01.15

General

The described work is to be carried out by qualified specialists.

Dimensions

Width	3,17 m
Height	2,08 m
Depth	0,80 m

Age group

No age restriction

Supplied Tools:

1 socket key-insertion 1/2" size 14

Tools additionally required:

1 ratch 1/2"

1 torx socket key T30

*The mounting equipment is in a box, which is attached to a tube of the goal (lower left corner)

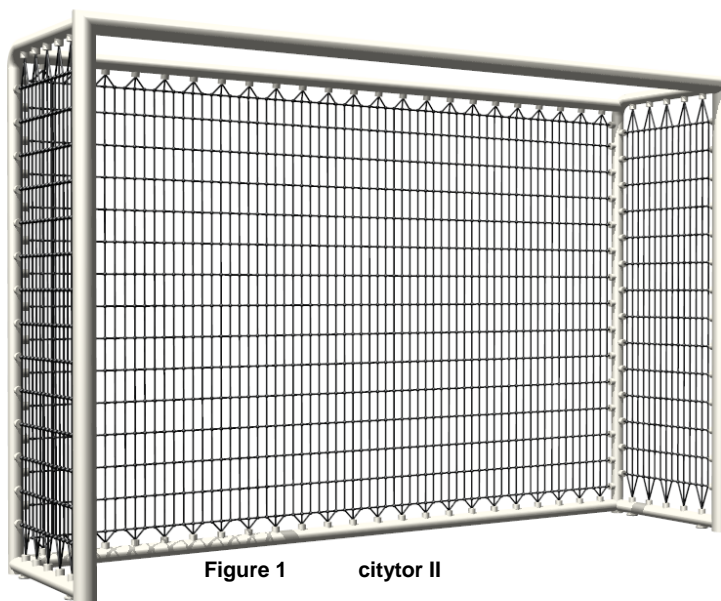


Figure 1 citytor II

Technical Details

The smb citytor original II is made of screwable round tubes with a diameter of 82,5 x 3,2 mm for the frame tubes in the front and 60,3 x 2,9 mm for the frame tubes in the back. The net of the goal is made of black Herkules rope, \varnothing 8 mm. The maximum mesh size is 36 x 122 mm, so that EN 1176-1 is met for children from 0 to 3 years.

ATTENTION!

Due to the technical characteristics of the goal, especially the mesh size of 36 x 122 mm, it is not climbable.

This goal meets the standards of DIN EN 1176-1:2008 as well as DIN EN 15312:2007.

Technical Details

The net ends are pressed into aluminum sleeves by taking three ropes at a time. These pressed aluminum sleeves, located in the back of the net parts and in both side parts, are inserted into the **ROWOCON®-sleeves** and fixed with setscrews M10x8 A2, Torx T30. These setscrews have a polyamide spot coating to prevent removal. **This connection also prevents an unwanted loosening of the screwing and enables at the same time an easy exchange of the nets, without having to remove or disassemble the entire goal**

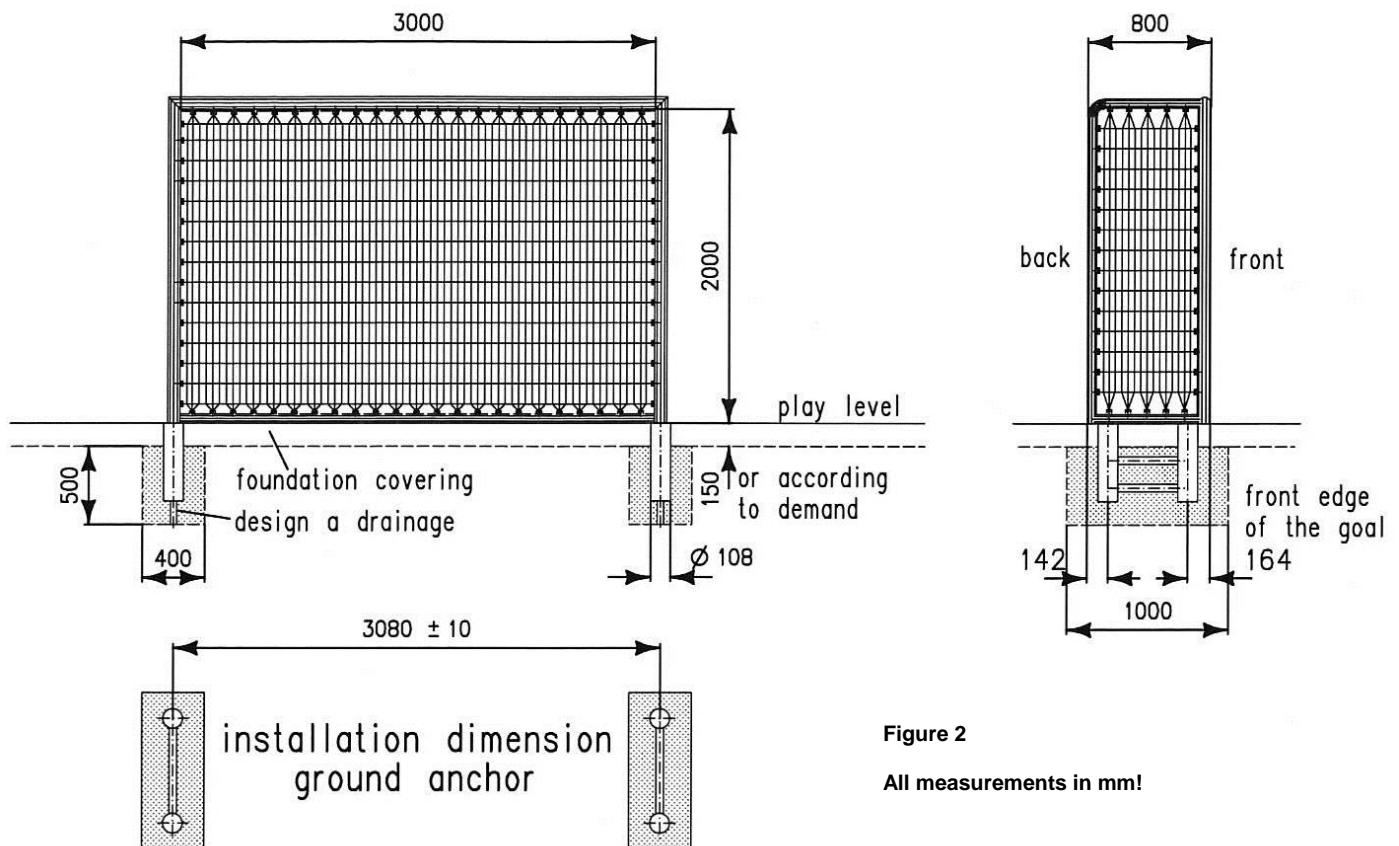


Figure 2

All measurements in mm!

Placing of the ground anchors into the concrete foundations

The ground anchors are to be set into the concrete foundations on the same level as the play level. Please make sure that the side with the movable slide block shows to the top (figure 4). We have calculated a depth of 150 mm for the sub-construction of the play level. According to this, the top edge of the foundations C20/25 (B25) is 150 mm below play level. When placing the concrete, a drainage is to be provided (**Figure 2**).

If the sub construction needs to be larger as 150 mm, please consult smb.

The correct screwing and positioning of the goal depends on the correct placing of the ground anchors!
Thus, the work is to be carried out accurately, taking into account the measurements of the drawing.

Screwing the smb-citytor II with the ground anchors

The **ROWOCON®-sleeves (4)** in the side parts of the smb-citytor original II are to be provided with **screws M16 (5)** and **lock washers (7)**. The **ropes (6)** of the goal net are not fixed at this point (**Figure 4**).

Remove the safety covers of the ground anchors with a screwdriver (**Figure 3**). The entire goal is to be adjusted via the **ground anchors (1)**. We recommend the storage of the safety covers for a possible reuse later on.

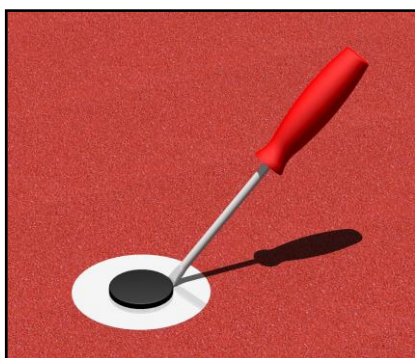


Figure 3

Now the supplied **screws M16x70 (5)** and **lock washers (7)** can be bolted with the help of the provided socket key insertion. The flexibility of the slide blocks in the **ground anchors (1)** can balance dimension inaccuracies. The **safety caps (figure 3)** close the openings of the **ground anchors (1)**.

After having bolted everything, the **ropes of the goal net (6)** need to be inserted into the **ROWOCON®-sleeves (4)** and screwed in with the **setscrews (3)** by using the torx socket key T30.

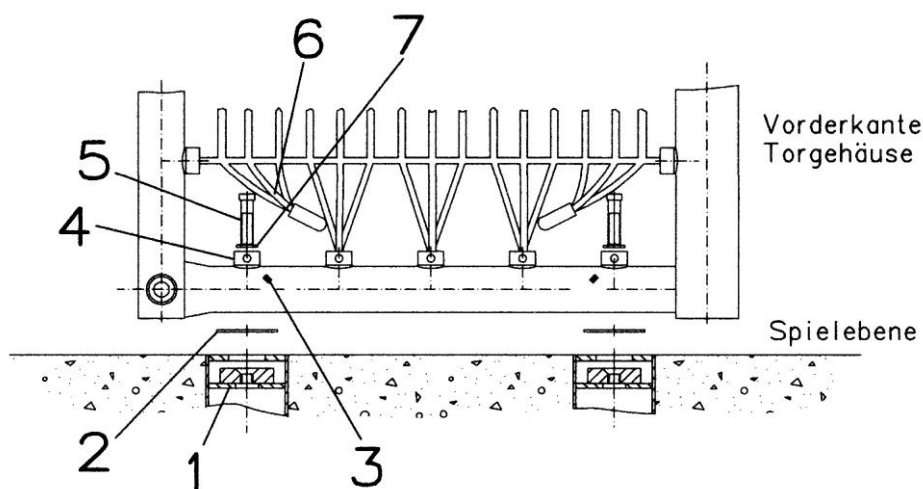


Figure 4

- 1 Ground anchor with slide block
- 2 Plastic washer
- 3 bolt M10x8 A2 DIN 916 Torx30
- 4 ROWOCON®-connection
- 5 Screw M16x70
- 6 Rope of the goal net
- 7 Lock washer

Maintenance instructions EN 1176-1

Visual routine inspection

Frequency will be based on local conditions (high/low use, vandalism, air pollution, effects of weather).

- The nets are to be checked for damage.
 - *If a strong damage is discovered, e.g. a break in the wire, smb needs to be consulted.*
 - *If only the rope coating is damaged and no wire is broken, there is no urgent need for repair. Please Note: Frayed filament can be fused with a flame (e.g. pocket lighter).*

Operational inspection (semi-annual)

(in addition to the visual routine inspection)

- Check the **ROWOCON**®-connections for a firm fit.
 - *If a damage is discovered, smb needs to be consulted.*
- The screwing of the goal frame needs to be checked (missing safety caps are to be replaced)
 - *If necessary, re-tighten the screwing.*
- Check the stability of the goal.
 - *Stand in front of the goal and at the top crossbar, tilt it back and forth.*
 - *If there is a noticeable instability / tilting, check the respective boltings and re-tighten. See figure 4 for the procedure.*