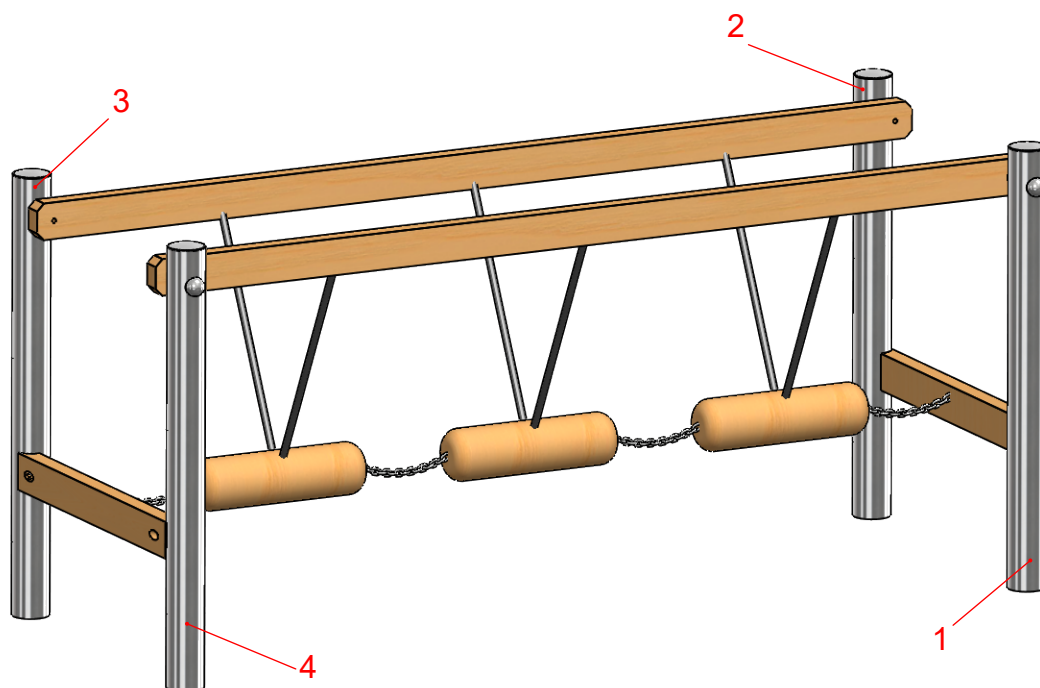
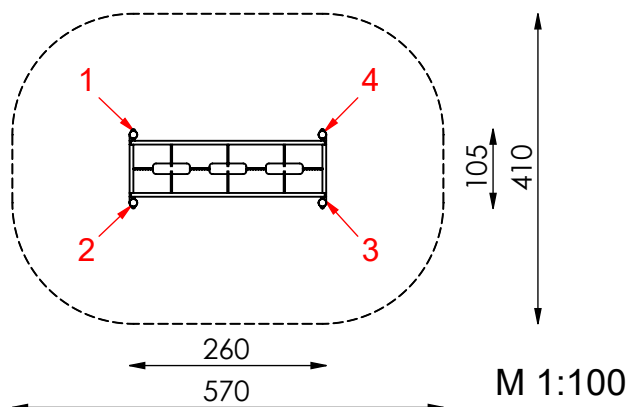


maximum free fall height (EN 1176):
50 cm

no fall-protective ground surface required



ASSEMBLY DRAWING

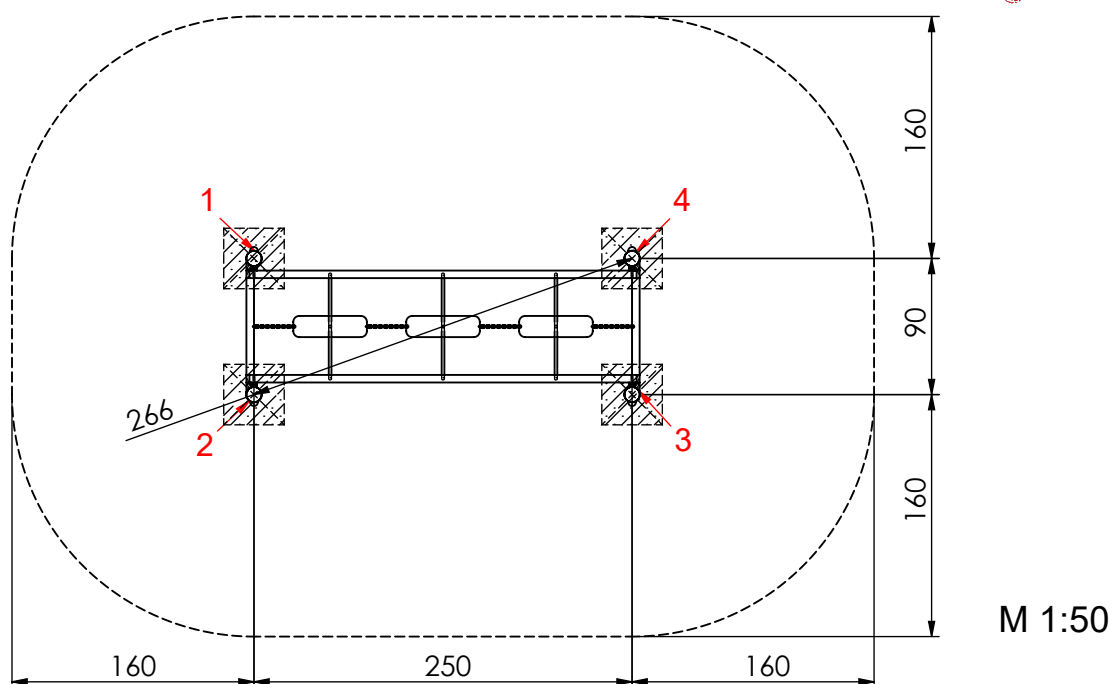
Bearbeiter: Hector Roca

Datum: 07.05.2019

Page: 1/2

Spiel-Bau GmbH
Alte Weinberge 21 - D-14776 Brandenburg / Havel
Tel.: 03381 / 26 14 0 - Fax.: 03381 / 26 14 18

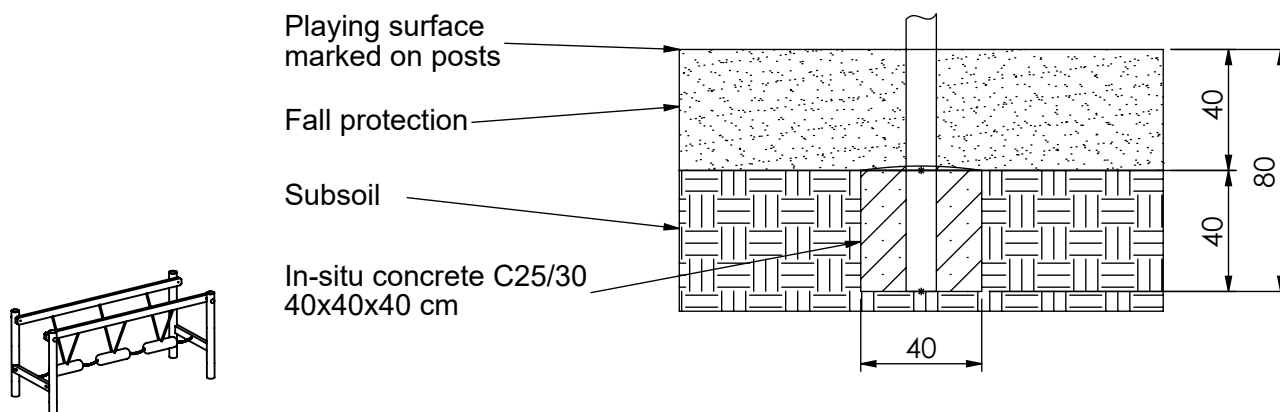
Wackelholzbrücke L250
Order-No.: 6.5416-E-en



Foundation: In-situ concrete C25/30

- Posts 1 to 4:
each 40x40x40 cm look at detail a-E)

Foundation detail - post a-E) Scale 1:25



ASSEMBLY DRAWING

Bearbeiter: Hector Roca

Datum: 07.05.2019

Page: 2/2

Spiel-Bau GmbH
Alte Weinberge 21 - D-14776 Brandenburg / Havel
Tel.: 03381 / 26 14 0 - Fax.: 03381 / 26 14 18

Wackelholzbrücke L250
Order-No.: 6.5416-E-en